

THE
WHITELEY
LONDON

APARTMENT 303 NORTH

4 Bedrooms
5 Bathrooms

Gross Internal Area
488 SqM / 5,253 SqFt

THE WHITELEY MARKETING SUITE
31 ST PETERSBURGH PLACE, LONDON W2 4LA
THEWHITELEYLONDON.COM

SALES DIRECTOR
CHARLES LEIGH
SALES@THEWHITELEYLONDON.COM
+44 (0)20 3019 0636

IMPORTANT NOTICE The seller, The Whiteley London, Queensway W2, its development manager Finchatton, Kingbridge and its appointed agents, give notice that these plans and associated particulars are prepared only for the general guidance of prospective buyers. They do not constitute part of an offer or contract. Any information contained herein is given in good faith but must not be relied upon as being a statement or representation of fact. Any areas, volumes, measurements or distances referred to herein are approximate only. The layouts are for guidance only and are not necessarily comprehensive. Floorplan illustrations show the layout of the accommodation only. Ceiling heights are indicative only – measurements are taken from principal rooms in each apartment and vary within each apartment. To view the architectural and structural items excluded from these accommodation layouts, please request the architectural plans from the sales office. Prospective buyers must rely on their own legal and professional advice and satisfy themselves in relation to all the foregoing matters by inspection or otherwise. March 2021.

Serviced by

SIX SENSES

303 NORTH

Duplex: 3rd and 5th Floor

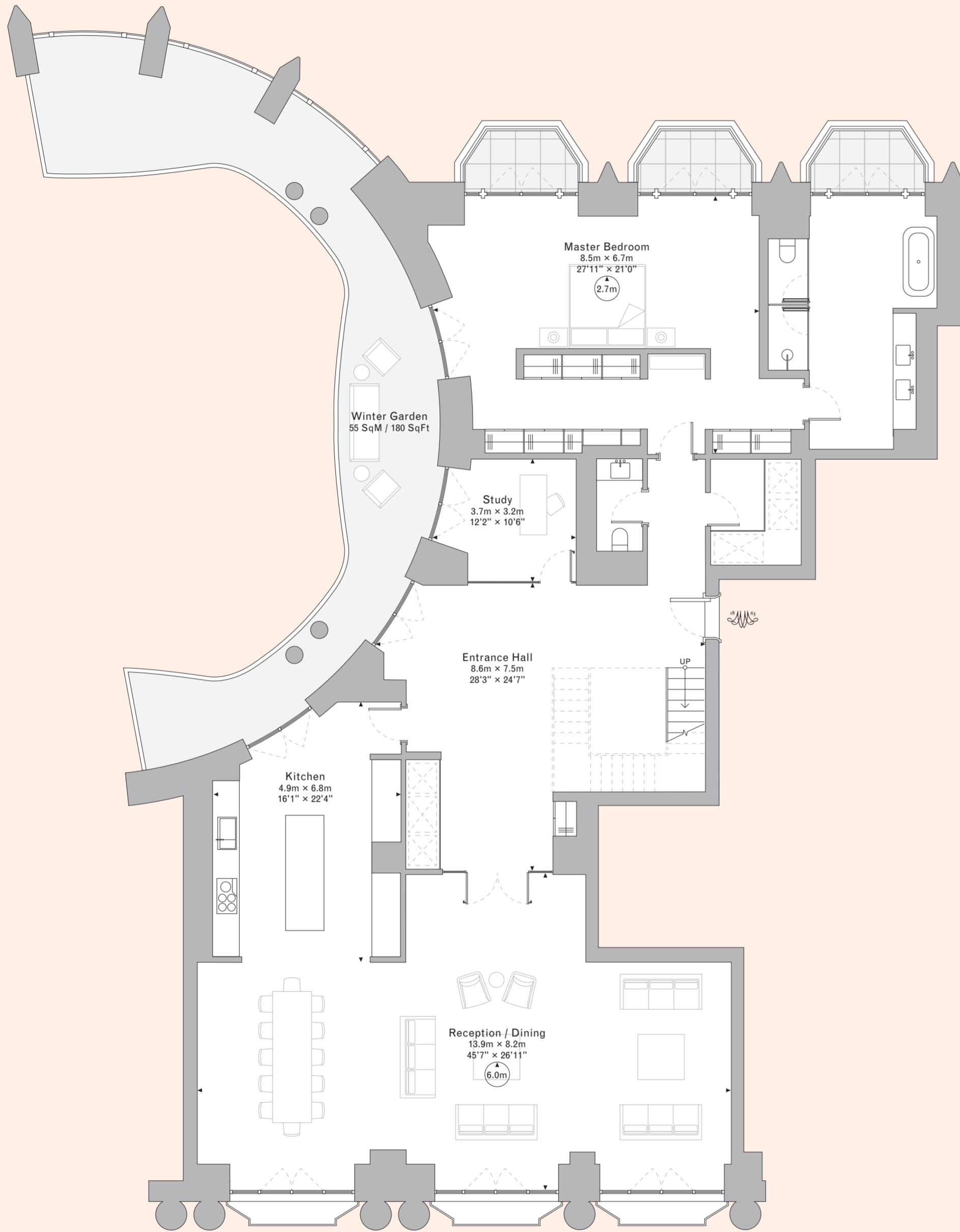
3rd Floor Area:
291 SqM / 3,133 SqFt

5th Floor Area:
197 SqM / 2,120 SqFt

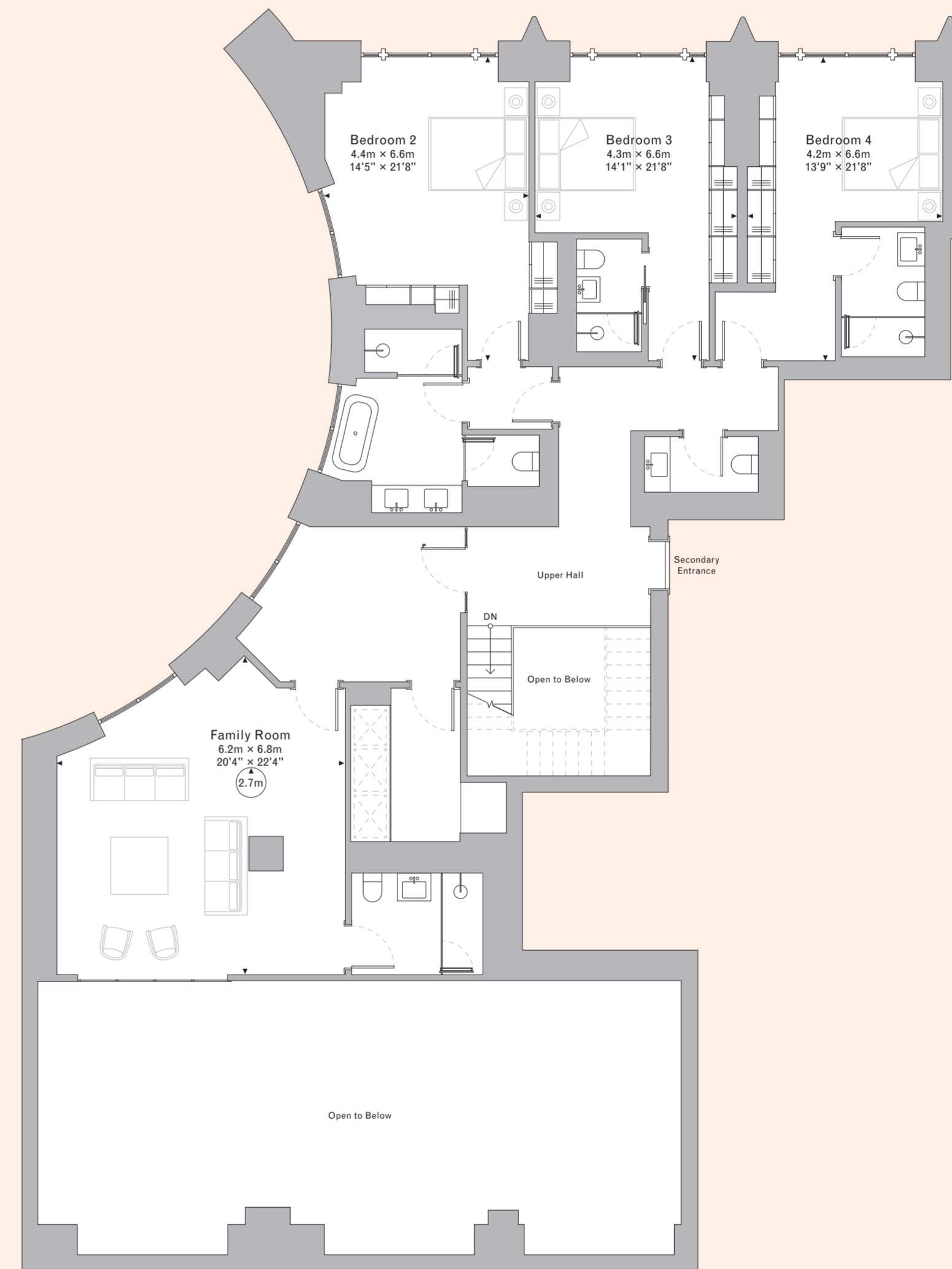
Total Gross Internal Area:
488 SqM / 5,253 SqFt

Total External Area:
68 SqM / 741 SqFt

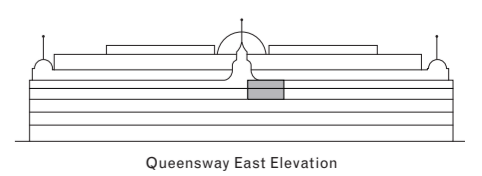
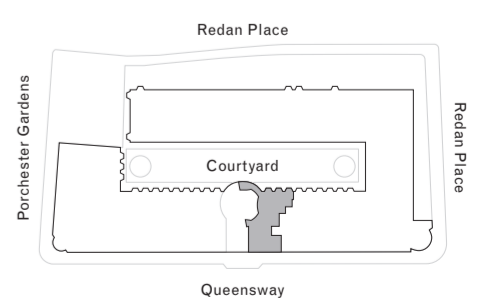
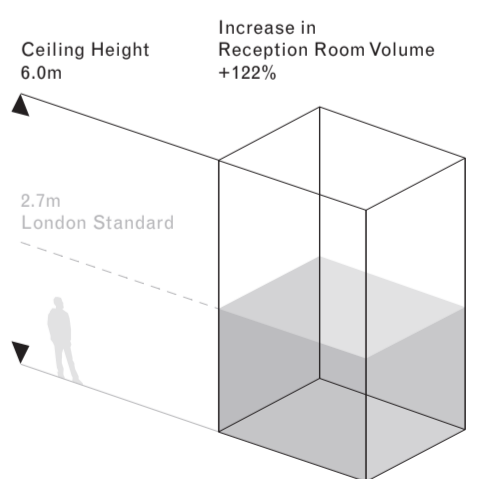
- 4 Bedrooms
- 5 Bathrooms
- Family Room
- Study
- Winter Garden
- 3 Balconies
- 3 Juliette Balconies



3rd Floor



5th Floor



Scale: 1cm = 1metre

