

THE  
**WHITELEY**  
LONDON

APARTMENT 313 CENTRAL

---

2 Bedrooms  
2 Bathrooms

Gross Internal Area  
119 SqM / 1,277 SqFt

THE WHITELEY MARKETING SUITE  
31 ST PETERSBURGH PLACE, LONDON W2 4LA  
THEWHITELEYLONDON.COM

SALES DIRECTOR  
CHARLES LEIGH  
SALES@THEWHITELEYLONDON.COM  
+44 (0)20 3019 0636

IMPORTANT NOTICE The seller, The Whiteley London, Queensway W2, its development manager Finchatton, Kingbridge and its appointed agents, give notice that these plans and associated particulars are prepared only for the general guidance of prospective buyers. They do not constitute part of an offer or contract. Any information contained herein is given in good faith but must not be relied upon as being a statement or representation of fact. Any areas, volumes, measurements or distances referred to herein are approximate only. The layouts are for guidance only and are not necessarily comprehensive. Floorplan illustrations show the layout of the accommodation only. Ceiling heights are indicative only – measurements are taken from principal rooms in each apartment and vary within each apartment. To view the architectural and structural items excluded from these accommodation layouts, please request the architectural plans from the sales office. Prospective buyers must rely on their own legal and professional advice and satisfy themselves in relation to all the foregoing matters by inspection or otherwise. March 2021.

Serviced by

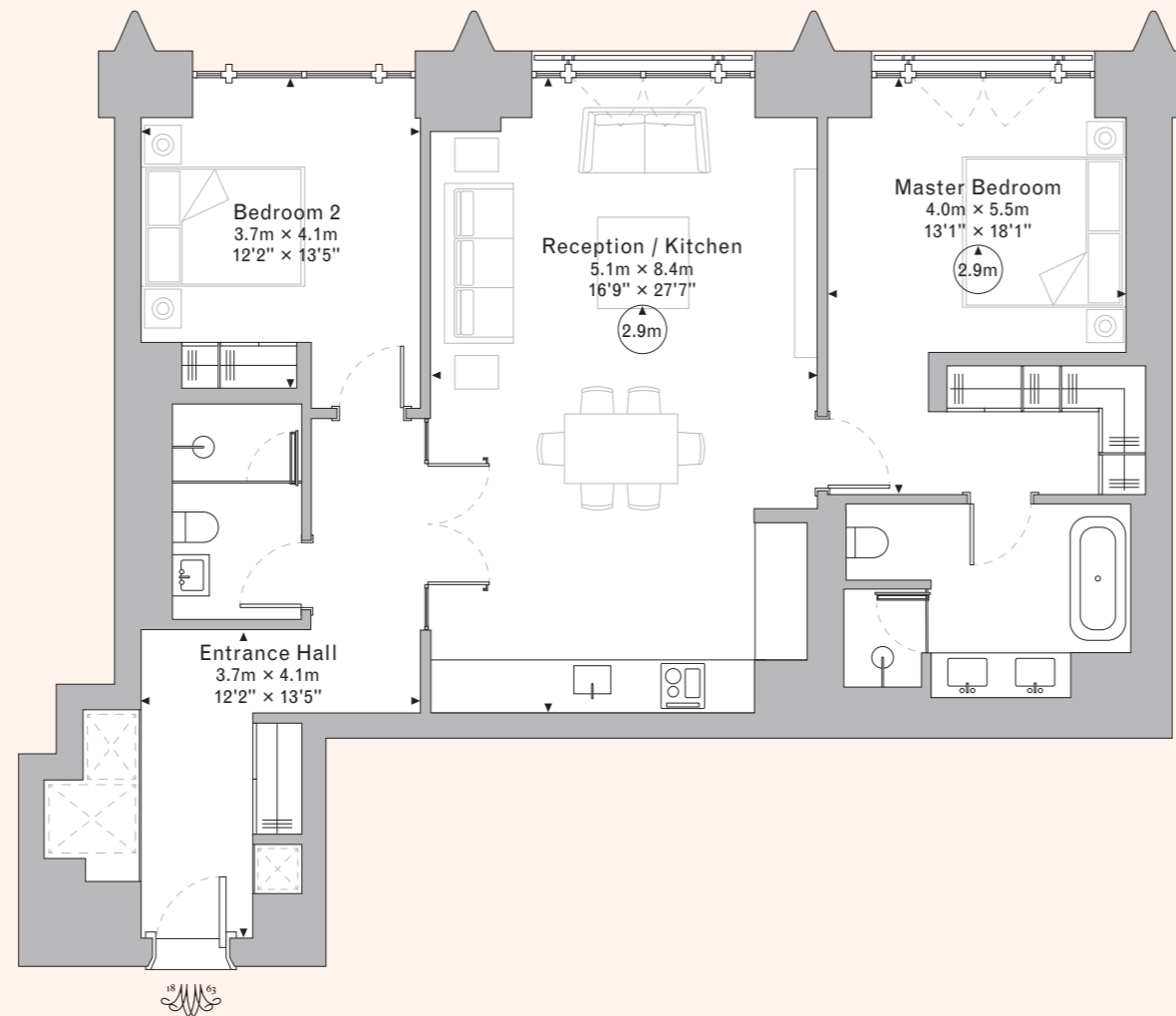


# 313 CENTRAL

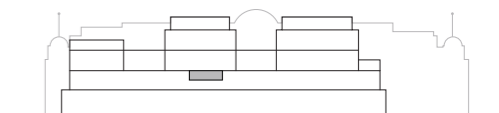
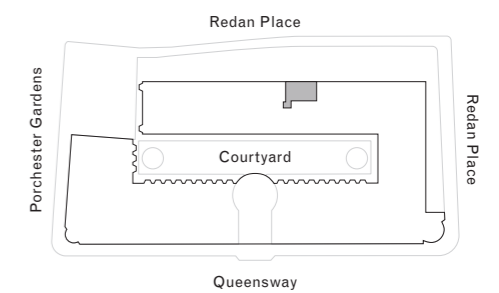
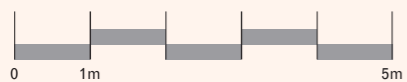
3rd Floor

Gross Internal Area:  
119 SqM / 1,277 SqFt

2 Bedrooms  
2 Bathrooms  
2 Juliette Balconies



Scale: 1cm = 1metre



Redan Place West Elevation